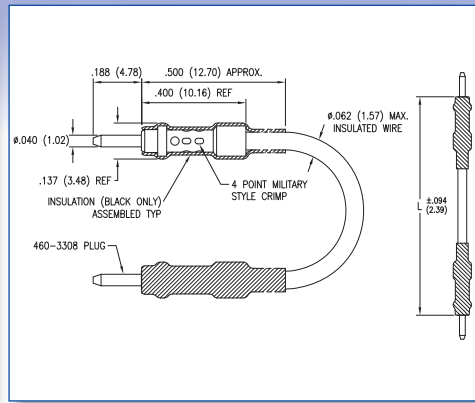


Dimensions in inches (mm)



How to order code

445 - 3306 - XX - 03 - XX

Basic Part No. | Wire Colour | Plug Finish

Material Code Table			
Component	Material	RoHS	
Insulation	Polyolefin Plastic	✓	
Plug	Brass	✓	
Insulated Wire:	Wire	Copper	✓
	Insulation	PTFE	✓

Finish Code Table		
Dash No.	Plug Finish	RoHS
-03	Gold	✓

Wire Code Table			
Dash No.	Wire Colour	Dash No.	Wire Colour
-10*	Black	-15	Green
-11	Brown	-16*	Blue
-12*	Red	-17	Violet
-13	Orange	-18	Grey
-14	Yellow	-19	White

Basic Part No.	L
445-3306 -02	4.000 (101.60)
-03	6.000 (152.40)

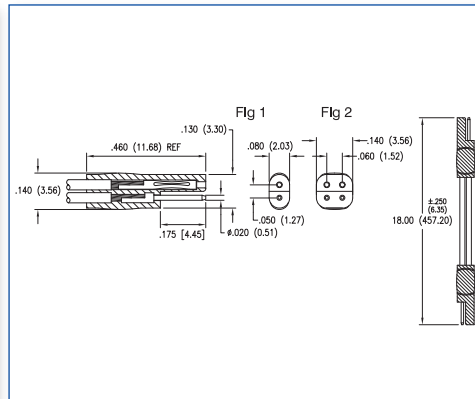
Basic Part No.	L
445-3306 -04	8.000 (203.20)
-05	12.000 (304.80)

Wire Colour *Standard – Others to order

Wire Data Ref: #20 AWG, 7 Strands #28 AWG Silver Plated Copper Wire

PATCHCORDS - SUB-MINIATURE - POLARISED

Dimensions in inches (mm)



How to order code

444 - 151X - 18 - 03 - XX

Basic Part No. | Wire Colour | Plug Jack Finish

Material Code Table			
Component	Material	RoHS	
Insulation	Nylon	✓	
Jack	Beryllium Copper	✓	
Pin	Brass	✓	
Insulated Wire:	Wire	Copper	✓
	Insulation	Vinyl	✓
Solder	60/40 Tin/Lead	X	

Finish Code Table		
Dash No.	Plug - Jack Finish	RoHS
-03	Gold	✓

Wire Code Table for Fig. 1	
Dash No.	Wire Colour
-01	White, White
-02	Black, Red

Wire Code Table for Fig. 2	
Dash No.	Wire Colour
-01	White, White, White, White
-02	Black, Red, White, Green

Fig.	Basic Part No.	Current Capacity Per Wire
1	444-1514 -18	1.5A
2	444-1515 -18	1.5A

Cable may be cut into two different sub-lengths as required by the user